



ATLAS

OCEAN VOYAGES®

---

# CAPTIVATING ANTARCTICA

NOVEMBER 2026–MARCH 2027





# INTIMATE YACHTING EXPEDITIONS™

Small yet powerful, the polar-class yachts of Atlas Ocean Voyages® explore worldwide destinations on year-round expeditions that leave you enriched, inspired and forever changed. Set sail with an exclusive cadre of fellow guests, expert guides and genuinely caring crew — all spirited explorers — in a relaxed, refined atmosphere of all-inclusive luxury. Head ashore to immerse yourself in the natural wonders, cultural icons and local cuisines of the world's most captivating destinations, and then return to the yacht to reflect on these experiences with close companions and newfound friends who share a desire to connect with the people and places of our cherished planet. Experience moments that ignite curiosity, inspire awe, elevate your heart rate and soothe your soul.



**GOLD LIST WINNER — WORLD VOYAGER®**  
**HOT LIST WINNER — WORLD VOYAGER®**  
**READER'S CHOICE AWARD WINNER — EXPEDITION SHIPS**

---

**WORLD NAVIGATOR® | WORLD TRAVELLER™ | WORLD VOYAGER®**  
**100 STATEROOMS AND SUITES, FEWER THAN 200 GUESTS**





## ALWAYS INCLUDED BY ATLAS

Every expedition with Atlas Ocean Voyages includes these complimentary amenities and more.

- Atlas Immersive Experience on board or ashore
- Gourmet dining with ever-changing menus
- Bars and lounges serving fine wines, spirits, craft beers and canapés
- Specialty coffees, fresh-pressed juices and afternoon tea service
- In-room stocked minibar, Nespresso® coffee and Vero Water®
- 24-hour room service
- L'OCCITANE bath amenities
- Gratuities for onboard service staff
- Use of binoculars and walking sticks
- Butler service in suites
- Trip delay and medical evacuation coverage





## POLAR EXPEDITIONS BY ATLAS™

Aboard our state-of-the-art, polar-class yachts, voyages to the Arctic, Antarctica and the southern tip of South America are accompanied by seasoned expedition leaders and a team that may include geologists, zoologists, conservationists and other researchers. These experts share invaluable insights into life in the polar regions during onboard briefings and guide thrilling Zodiac safaris, shore landings and kayaking adventures that reveal the astonishing natural beauty of these glacial wonderlands.

### INCLUSIONS EXCLUSIVE TO POLAR EXPEDITIONS

- Private charter jet service with private group transfers
- 1-night pre-expedition hotel stay
- 1-night post-expedition hotel stay on select Antarctica expeditions
- Enrichment lectures and destination briefings
- Shore landings led by expert field guides
- Escorted sightseeing safaris by Zodiac
- Polar plunge
- Atlas Ocean Voyages parka, vest and water bottle
- Use of knee boots

### CAPTAIN'S CHOICE

Embrace a spirit of adventure, spontaneity, and flexibility as your Captain and expedition team determine the best possible sites for landings and Zodiac safaris based on weather.









# CONSCIOUS NAVIGATION

Classified as Polar Category C and Ice Class 1B, our yachts are made for experiencing polar regions to the max. With a hydro-jet propulsion system that allows us to cruise virtually silently, our yachts minimize underwater noise so as not to disturb marine life. We realize the possibilities of environmental stewardship with the latest hybrid power management and propulsion systems, maximizing fuel efficiency and consuming as low as one-fifth the fuel compared to conventional cruise-ship systems, reducing our impact on the environment.







## POLAR EXPEDITION PARTNERSHIPS IN ANTARCTICA

---

### ORCA

An ocean conservationist from ORCA, a whale and dolphin conservancy, joins select expeditions in Antarctica to give you and your fellow explorers the opportunity to become Citizen Scientists by learning to gather data, record sightings and take photos through interactive, hands-on workshops.

### GLOBAL PENGUIN SOCIETY

On select expeditions in Antarctica, join conservationists from the Global Penguin Society as they track and record vital information for protecting the future of the world's penguin populations.



# WORLD-CLASS EXPEDITION TEAM

Every Polar Expedition is led by a team of up to 17 professionals who have explored from Antarctica to the Arctic, and remote destinations the world over. Their expertise and leadership ensure that each expedition inspires and enlightens you while protecting pristine environments.





## YOUR EXPERTS

With a mix of wilderness guides, naturalists, mountaineers, biologists, conservationists, photographers, historians, and other experts, you will gain profound insight into your explorations, giving you a greater appreciation and sense of wonder for the wildlife and ecosystems.

### — POLAR EXPEDITION TEAMS —



#### ZODIAC OPERATORS

Having explored Antarctica, Patagonia, the Arctic and beyond, Zodiac operators lead the way during sea safaris and shore landings, providing close encounters with epic scenery and local wildlife.



#### KAYAK GUIDES

With many years of experience in kayaking and other maritime pursuits, kayak guides lead excursions amid the ice floes and point out wildlife such as seals and whales that you may encounter along the way.



#### MOUNTAINEERS

Experts in mountaineering and hiking in the polar regions lead you to the most spectacular vantage points in these remote landscapes while taking care to protect delicate flora.



#### BIOLOGISTS

Zoologists and marine biologists share fascinating insights on the majestic wildlife you encounter, including the many species of seals and whales that inhabit Antarctica.



#### ORNITHOLOGISTS

While Antarctica and the Falklands may be best known for their many species of penguin, ornithologists will also enlighten you about other polar seabirds, including albatross and petrels of the Antarctic.



#### CLIMATOLOGISTS

Experts who study polar weather and atmospheric changes help you understand the meteorological importance of these regions and how they affect the world.

# ANTARCTICA WILDLIFE

Navigating amid electric blue icebergs to a rocky shore where mountains clad in blindingly white snow rise into the clouds, you'll feel as if you're on another planet. Whether you're hiking a massive glacier alongside a colony of Adélie penguins or watching a humpback whale breach the surface just feet away on a Zodiac safari, there will be moments when the ethereal beauty of the Antarctic takes your breath away.

Antarctica thrives with incredible wildlife. Below are the best times of the year to look for these awe-inspiring possible sights.



## DECEMBER

Watch for blue petrels as they guide your way along the Drake Passage

Witness gentoo, Adélie and chinstrap penguins hatching

Increased sightings of humpback whales near the Peninsula

## NOVEMBER

Antarctica's seabirds begin courting season at the end of the month

King penguin females lay their eggs in South Georgia

Fur seals display their mating rituals in South Georgia





## JANUARY

Spot humpbacks while on a Zodiac safari

Prime season to see penguin chicks in the Peninsula

Search for Weddell seals as they lounge on an ice floe



## FEBRUARY

Adult penguins begin molting and the chicks are actively learning to swim

May see leopard seals hunting and molting

Watch the penguin highways as the parents dive in and out of the water to feed their young at the beginning of the month



## MARCH

Blue-eyed cormorants (or imperial shags) are fledging in the Peninsula

Watch for minke, fin and other whales up close as they may come close to Zodiacs and kayaks

Listen for the mating song of the leopard seals as they begin to court

# ATLAS ASHORE

Atlas Ocean Voyages takes great care to ensure you explore as far and wide as you wish, be it before, during or after your expedition.

## INCLUDED IMMERSIVE EXPERIENCES

---

### EXPLORING TIERRA DEL FUEGO NATIONAL PARK ON ALL EXPEDITIONS BEGINNING IN USHUAIA



Before embarking on your exhilarating expedition to Antarctica, marvel upon scenes of subantarctic Patagonia at the southernmost national park, also a UNESCO World Heritage Site. A panoramic coach tour takes you through scenic landscapes of spectacular lakes, glaciers, mountains, waterfalls and forests that inspire awe and wonder.

### A TRUE TASTE OF CHILE ON ALL EXPEDITIONS BEGINNING IN KING GEORGE ISLAND

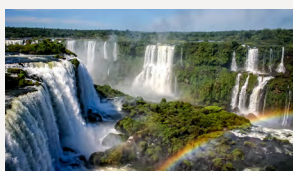


Experience authentic Chilean culture on a pre-expedition immersion in Punta Arenas. Embark on a comfortable coach that will take you through picturesque scenes of Patagonia to a multi-course dinner at a local, ranch-style restaurant. Throughout your dinner experience, a beautiful combination of indigenous and European culture, colorful costumes, mesmerizing choreography and exciting music will inspire a sense of wonder.

## OPTIONAL LAND PROGRAMS

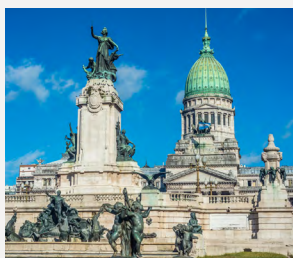
---

### EXPLORING IGUAZÚ FALLS PRE-EXPEDITION LAND PROGRAM



Immerse yourself in the spectacular scenery of the Iguazú Falls — one of the Seven Natural Wonders of the World and also a UNESCO World Heritage Site. Explore further on an exciting Zodiac safari around the cascades. Coming up close to the rushing waters of these magnificent waterfalls, a sense of reverence may overcome you. *Call for pricing.*

### HIGHLIGHTS OF BUENOS AIRES PRE- AND POST-EXPEDITION LAND PROGRAM



Discover the cultural highlights and local color of Buenos Aires led by a knowledgeable guide. Explore historical landmarks like the famous Casa Rosada and Recoleta Cemetery, where renowned figures of the past have been laid to rest, including Eva “Evita” Perón. The city’s neighborhoods, each with their own unique personality, beckon for you to uncover their rich history. Experience quintessential Buenos Aires with a dazzling evening at a tango show and delicious dinner. *Call for pricing.*



## INCLUDED EXPEDITION EXPERIENCES

---



### ZODIAC SAFARIS

Get closer to your environment as you embark on one of the custom-made Zodiacs made for our yachts. While cruising the Antarctic coasts and communicating with the Captain, your expert expedition team will guide you through the continent's many wonders, pointing out marine wildlife along the way.



### EXPEDITION LANDINGS

Your expedition guides may lead you to dedicated high points and sightseeing locations for some of the best views. You may come across some of Antarctica's renowned wildlife, like a penguin colony filled with the whimsical birds as they go about their natural lives.



### POLAR PLUNGE

Connect with your wild side as you plunge into icy waters, much like the seals and penguins of Antarctica. With your fellow explorers cheering you on, it's easy to take on the challenge. And feel free to be a spectator as you cheer on your new friends while they take the plunge.

## OPTIONAL EXPEDITION EXPERIENCES

---

### KAYAKING

Alongside a kayak master, experienced kayakers have the opportunity to safely cruise through Antarctica's unspoiled waters, perhaps even coming close to penguins as they dive from ice floes into the sea. Look out for incredible moments, like the possibility of a whale breaching mere feet away from your kayak.

**\$200 PER GUEST PER OUTING**

### CAMPING

You could spend a night camping in Antarctica for a once-in-a-lifetime experience. Before settling in for the night, you have one last chance to grab a hot meal and shower on board. Once the Zodiac brings you back to shore, it's a truly wild experience as you and your fellow explorers fall asleep under the Midnight Sun.

**\$750 PER GUEST PER OUTING**

Included cultural immersions and all expedition experiences are subject to availability and may be changed or withdrawn at any time without notice. Requests for reservations may be made in advance, however, payments and reservation confirmations will be processed once you are on board the yacht. If you need to cancel your reservation, you may do so up to 72 hours prior to voyage departure to receive a full refund. Prices shown are subject to change any time without notice.

# UPGRADE YOUR ADVENTURE

## BONUS SAVINGS UP TO 20%

Enjoy exclusive savings on 2025 & 2026 select expeditions. From Polar Expeditions to the most remote corners of the world to Epicurean Expeditions in the Mediterranean and Cultural Expeditions that take you to captivating corners of South America, Northern Europe and Iceland. There's more than one way to explore the world.

## SAIL MORE SAVE MORE — UP TO 15%

When explorers combine two or more back-to-back expeditions, the adventure continues. More time exploring culinary and wine traditions, delving into folklore or traversing remote lands. The more you explore, the more you save.

- Book three or more back-to-back Expeditions and save 15%
- Book two or more back-to-back Expeditions and save 10%

## MILITARY EDGE

To honor ALL military service members — U.S. and international armed forces — we are pleased to offer exclusive additional savings of up to 20% on many expeditions, combinable with select offers. *Call for details.*





Our yachts are guided by nature; itinerary routes shown may be affected by weather and ice conditions.

INCLUDED ROUNDTrip  
PRIVATE CHARTER  
JET SERVICE

ARGENTINA

BUENOS AIRES

SOUTH ATLANTIC OCEAN

USHUAIA

SOUTH PACIFIC OCEAN

DRAKE PASSAGE

SOUTH SHETLAND ISLANDS

ANTARCTIC PENINSULA

66° 33' ANTARCTIC CIRCLE

## ANTARCTIC DISCOVERY USHUAIA ROUNDTrip

9 NIGHTS

SEE BELOW FOR YACHTS & DATES

### — PRE-EXPEDITION —

INCLUDED 1-Night Hotel Stay in Buenos Aires

Day 1

**INCLUDED Private Charter Jet Service**  
From Buenos Aires to Ushuaia

**ATLAS IMMERSIVE EXPERIENCE:**  
Exploring Tierra Del Fuego National Park  
Marvel upon scenes of subantarctic Patagonia  
at the southernmost national park.

USHUAIA, ARGENTINA | EMBARK 3 PM

Days 2–3

Drake Passage Navigation  
Monumental icy peaks greet you on  
your victorious rite of passage.

Day 4

Exploring the South Shetland Islands 🚢  
Possible landing on Deception Island, a  
volcanic caldera of black-sand shores.

Days 5–7

Exploring the Antarctic Peninsula 🚢  
Watch the Gentoos take the penguin highway  
on a guided shore landing.

Days 8–9

Drake Passage Navigation  
Celebrate the end of the journey with  
a staff and crew talent show.

Day 10

USHUAIA, ARGENTINA | DEBARK 8 AM  
**INCLUDED Private Charter Jet Service**  
From Ushuaia to Buenos Aires

🚢 CAPTAIN'S CHOICE see page 4



POLAR  
EXPEDITIONS  
BY ATLAS™



ZODIAC SAFARI



GENTOO PENGUINS

### WORLD NAVIGATOR®

NOVEMBER 8, 2026;  
NOVEMBER 28, 2026;  
DECEMBER 27, 2026 ❄️

FEBRUARY 5, 2027;  
MARCH 19, 2027

### WORLD TRAVELLER™

FEBRUARY 1, 2027;  
FEBRUARY 10, 2027



HOLIDAY  
EXPEDITION

Our yachts are guided by nature; itinerary routes shown may be affected by weather and ice conditions.



## ANTARCTIC & FALKLANDS ADVENTURE BUENOS AIRES TO USHUAIA

16 NIGHTS | WORLD TRAVELLER™

NOVEMBER 12, 2026 🌐; MARCH 13, 2027 (REVERSE)

- Day 1 **BUENOS AIRES, ARGENTINA**  
EMBARK 3 PM
- Days 2–4 At Sea
- Day 5 West Point Island, Falkland Islands 📍  
Black-browed albatrosses soar high above and rockhopper penguins waddle across boulders.
- Day 6 Carcass Island, Falkland Islands 📍  
Observe Elephant seals basking in the sun.  
Saunders Island, Falkland Islands 📍  
Watch the water for Gentoo penguins as they surf the waves onto the shore.
- Day 7 Port Stanley, Falkland Islands  
Watch in awe as endemic and rare birds gracefully take flight.
- Days 8–9 At Sea
- Days 10–14 Exploring the Antarctic Peninsula 📍  
Watch the Gentoo take the penguin highway on a guided shore landing.
- Days 15–16 At Sea
- Day 17 **USHUAIA, ARGENTINA | DEBARK 8 AM**  
**INCLUDED Private Charter Jet Service**  
**From Ushuaia to Buenos Aires**

📍 CAPTAIN'S CHOICE see page 4



HOLIDAY  
EXPEDITION



POLAR  
EXPEDITIONS  
BY ATLAS™



GENTOO PENGUINS



ALBATROSSES



ELEPHANT SEAL



Our yachts are guided by nature; itinerary routes shown may be affected by weather and ice conditions.

INCLUDED ROUNDTrip  
PRIVATE CHARTER  
JET SERVICE

SOUTH PACIFIC  
OCEAN

ARGENTINA

BUENOS AIRES

USHUAIA

SOUTH ATLANTIC  
OCEAN

DRAKE  
PASSAGE

SOUTH SHETLAND  
ISLANDS

ANTARCTIC PENINSULA

## EXPLORING THE LAST CONTINENT USHUAIA ROUNDTrip

11 NIGHTS

SEE BELOW FOR YACHTS & DATES

### — PRE-EXPEDITION —

INCLUDED 1-Night Hotel Stay in Buenos Aires

**Day 1 INCLUDED Private Charter Jet Service  
From Buenos Aires to Ushuaia**

**ATLAS IMMERSIVE EXPERIENCE:**  
Tierra del Fuego National Park is on magnificent display during a panoramic coach tour with lunch included.

USHUAIA, ARGENTINA | EMBARK 3 PM

**Days 2–3 Drake Passage Navigation**  
Monumental icy peaks greet you on your victorious rite of passage.

**Days 4–7 Exploring the Antarctic Peninsula** 🧭  
Become enraptured with the abundant wildlife, guided by naturalists, biologists and other experts.

**Days 8–9 Exploring the South Shetland Islands** 🧭  
Your expedition guide may take you on a Zodiac safari in search of penguins, whales and seals.

**Days 10–11 Drake Passage Navigation**  
Spend these days at sea immersing yourself in storytelling and camaraderie with fellow explorers.

**Day 12 USHUAIA, ARGENTINA | DEBARK 8 AM**  
**INCLUDED Private Charter Jet Service  
From Ushuaia to Buenos Aires**

🧭 CAPTAIN'S CHOICE see page 4



POLAR  
EXPEDITIONS  
BY ATLAS™



KAYAKING EXCURSION



ORCA WHALES



ATLAS LOUNGE

WORLD NAVIGATOR®

NOVEMBER 17, 2026 ❄️

FEBRUARY 25, 2027;  
MARCH 8, 2027

WORLD TRAVELLER™

FEBRUARY 19, 2027;  
MARCH 2, 2027



HOLIDAY  
EXPEDITION

Our yachts are guided by nature; itinerary routes shown may be affected by weather and ice conditions.



## DRAKE FLY & SAIL USHUAIA TO KING GEORGE ISLAND

9 NIGHTS | WORLD TRAVELLER™  
NOVEMBER 28, 2026

— PRE-EXPEDITION —  
INCLUDED 1-Night Hotel Stay in Buenos Aires

- Day 1** INCLUDED Private Charter Jet Service  
From Buenos Aires to Ushuaia
- ATLAS IMMERSIVE EXPERIENCE:**  
Tierra del Fuego National Park is on magnificent display during a panoramic coach tour with lunch included.
- USHUAIA, ARGENTINA | EMBARK 3 PM**
- Days 2–3** Drake Passage Navigation  
Monumental icy peaks greet you on your victorious rite of passage.
- Days 4–8** Exploring the Antarctic Peninsula 🧑‍🔬  
Become enraptured with the abundant wildlife, guided by naturalists, biologists and other experts.
- Day 9** Exploring The Antarctic Sound 🧑‍🔬  
Awe-inspiring tabular icebergs lead the way to Adélie penguin colonies basking on rocky shores.
- Day 10** KING GEORGE ISLAND, SOUTH SHETLAND ISLANDS | DEBARK 8 AM  
INCLUDED Private Charter Jet Service  
From King George Island to Punta Arenas

— POST-EXPEDITION —  
INCLUDED 1-Night Hotel Stay in Punta Arenas

🧑‍🔬 CAPTAIN'S CHOICE see page 4



POLAR  
EXPEDITIONS  
BY ATLAS™





Our yachts are guided by nature; itinerary routes shown may be affected by weather and ice conditions.



## DRAKE EXPRESS KING GEORGE ISLAND ROUNTRIP

7 NIGHTS | WORLD TRAVELLER™  
DECEMBER 7, 2026; DECEMBER 14, 2026

### — PRE-EXPEDITION —

INCLUDED 1-Night Hotel Stay in Punta Arenas

#### ATLAS IMMERSIVE EXPERIENCE:

Enjoy a local dining experience in Punta Arenas and a performance of traditional song and dance.

- Day 1 **INCLUDED Private Charter Jet Service**  
**From Punta Arenas to King George Island**  
**KING GEORGE ISLAND, SOUTH SHETLAND ISLANDS | EMBARK 3 PM**
- Days 2–6 Exploring the Antarctic Peninsula 🏠  
One day you may see penguins nesting and the next you may spot a Weddell seal lounging.
- Day 7 Exploring The Antarctic Sound 🏠  
Awe-inspiring tabular icebergs lead the way to Adélie penguin colonies basking on rocky shores.
- Day 8 **KING GEORGE ISLAND, SOUTH SHETLAND ISLANDS | DEBARK 8 AM**  
**INCLUDED Private Charter Jet Service**  
**From King George Island to Punta Arenas**

### — POST-EXPEDITION —

INCLUDED 1-Night Hotel Stay in Punta Arenas

🏠 CAPTAIN'S CHOICE see page 4



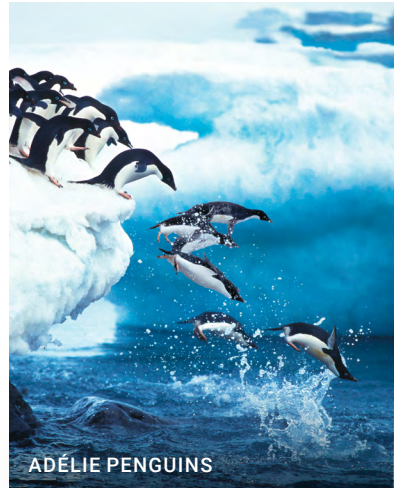
POLAR  
EXPEDITIONS  
BY ATLAS™



WEDDELL SEALS



WATER'S EDGE



ADÉLIE PENGUINS

Our yachts are guided by nature; itinerary routes shown may be affected by weather and ice conditions.



## CROSSING THE ANTARCTIC CIRCLE USHUAIA ROUNDTRIP

11 NIGHTS

SEE BELOW FOR YACHTS & DATES

### — PRE-EXPEDITION —

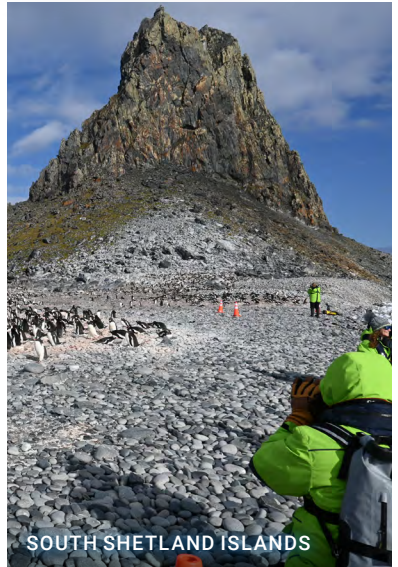
INCLUDED 1-Night Hotel Stay in Buenos Aires

- Day 1** INCLUDED Private Charter Jet Service  
From Buenos Aires to Ushuaia
- ATLAS IMMERSIVE EXPERIENCE:**  
Tierra del Fuego National Park is on magnificent display during a panoramic coach tour with lunch included.
- USHUAIA, ARGENTINA | EMBARK 3 PM**
- 
- Days 2–3** Drake Passage Navigation  
Monumental icy peaks greet you on your victorious rite of passage.
- 
- Day 4** Crossing the Antarctic Circle  
Navigate into the furthest reaches of the Seventh Continent at the 66th parallel.
- 
- Days 4–7** Exploring the Antarctic Peninsula 🏠  
Your expedition team will guide you on shore landings or Zodiac safaris, weather permitting.
- 
- Days 8–9** Exploring the South Shetland Islands 🏠  
A Zodiac safari may bring you up close to the prominent black columns of Edinburgh Hill.
- 
- Days 10–11** Drake Passage Navigation
- 
- Day 12** **USHUAIA, ARGENTINA | DEBARK 8 AM**  
INCLUDED Private Charter Jet Service  
From Ushuaia to Buenos Aires

🏠 CAPTAIN'S CHOICE see page 4



POLAR  
EXPEDITIONS  
BY ATLAS™



WORLD NAVIGATOR®

DECEMBER 16, 2026 ❄️

FEBRUARY 14, 2027

WORLD TRAVELLER™

DECEMBER 23, 2026 ❄️

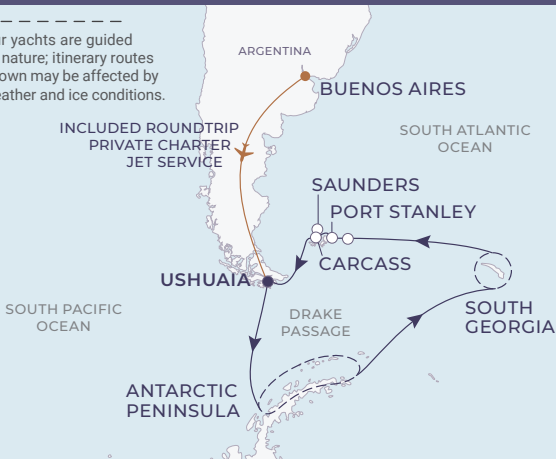
JANUARY 21, 2027



HOLIDAY  
EXPEDITION



Our yachts are guided by nature; itinerary routes shown may be affected by weather and ice conditions.



## GRAND ANTARCTICA USHUAIA ROUNDRIP

18 NIGHTS | WORLD TRAVELLER™

**JANUARY 3, 2027**

### — PRE-EXPEDITION —

INCLUDED 1-Night Hotel Stay in Buenos Aires

**Day 1 INCLUDED Private Charter Jet Service From Buenos Aires to Ushuaia**

**ATLAS IMMERSIVE EXPERIENCE:**  
Tierra del Fuego National Park is on magnificent display during a panoramic coach tour with lunch included.

**USHUAIA, ARGENTINA | EMBARK 3 PM**

**Days 2–3 Drake Passage Navigation**  
Conquer the famed waterway and claim your rite of passage.

**Days 4–7 Exploring The Antarctic Peninsula** 🏠  
This is a prime time to witness the penguin chicks born over the holidays.

**Days 8–10 At Sea**  
Take in 270-degree and overhead views at The Dome observation lounge.

**Days 11–13 Exploring South Georgia** 🏠  
King penguins in all stages of their life cycle can be found aplenty.

**Days 14–15 At Sea**  
Engage in conversations with our expert expedition team as they share rare insights.

**Day 16 Port Stanley, Falkland Islands**  
Witness avian wonders like Magellanic snipes or southern giant petrels.

**Day 17 Saunders Island, Falkland Islands** 🏠  
Watch the water for Gentoo penguins as they surf the waves onto the shore.  
**Carcass Island, Falkland Islands** 🏠  
Observe Elephant seals basking in the sun.

**Day 18 At Sea**

**Day 19 USHUAIA, ARGENTINA | DEBARK 8 AM**  
**INCLUDED Private Charter Jet Service From Ushuaia to Buenos Aires**



**POLAR  
EXPEDITIONS  
BY ATLAS™**



ZODIAC SAFARI



ANTARCTIC PENINSULA



LEOPARD SEAL

🏠 CAPTAIN'S CHOICE see page 4

# LET US GET TO KNOW YOU

The officers, staff and crew aboard our intimate yachts share your love of travel. This is why we have chosen a life at sea, and this is why we are so passionate about creating an extraordinary experience for you. We know the joy of new discoveries, and this joy inspires our exceptional service and attention to every detail. As we travel together, we will naturally get to know one another, and thus the service we provide comes not from obligation but from genuine care and a sense of camaraderie.



LISBOA | *World Traveller*





PAULA'S PANTRY | *World Traveller*



THE DOME | *World Voyager*



SEASPA BY L'OCCITANE | *World Navigator*



# INSPIRING DAYS

Aboard our yachts, we cultivate an intimate ambiance that encourages connection with your fellow explorers, your expedition guides, yourself and your environment. Expedition talks and workshops from guest speakers, historians, photographers and other experts in their fields will fascinate your curious mind. Watch your destination grow closer sitting just 30 feet above the waterline at Water's Edge. Journey inward with a well-equipped Fitness Studio, running track on the top deck, relaxing sauna at SeaSpa by L'OCCITANE and other health and wellness amenities. Swap stories with fellow explorers while sipping on craft cocktails at Atlas Lounge. Or engage in lively conversation while gazing upon wondrous scenes from The Dome observation lounge with 270-degree and overhead views.



THE DOME | *World Traveller*





## globally inspired cuisine

Your culinary adventures on board rival your discoveries ashore. From a savory journey through regional dishes or a leisurely afternoon tea, appreciate an experience that's more than cuisine.

### PORTO

WORLD NAVIGATOR®

### LISBOA

WORLD TRAVELLER™

### MADEIRA

WORLD VOYAGER®

Aboard our intimate yachts, our main restaurant offers a generous breakfast and lunch buffet — plus a made-to-order menu featuring omelets, waffles, frittatas, carving stations and salads — that changes daily. Multi-course dinner menus showcase classic favorites as well as adventurous culinary experiences that feature a new regional inspiration every evening from appetizers all the way to dessert. Plus, every night each regional menu offers a complementary plant-based, vegetarian option that you can feel free to mix and match with that evening's offerings.

### THE DOME

Remember to look up or take in 270-degree window views at the observation lounge after your day of exploring while enjoying a wide selection of Kusmi teas, light snacks and pastries with the longstanding tradition of afternoon tea. Here you will also find espresso drinks throughout the day and pre-dinner canapés.

### THE EXPLORER'S TABLE

Discover an intimate Omakase-style dining experience on Polar Expeditions to Antarctica and the High Arctic. Enjoy a multi-course tasting menu with only 10 guests, set in The Dome, featuring global cuisine from Spain, Korea, France, Argentina, and North America paired with premium wines. Reservations required; additional fee applies.

### PAULA'S PANTRY

Stop by our cozy café for a grab 'n' go breakfast or midday snack, including muffins, doughnuts, fresh-pressed juices and La Cimbali coffees, specialty teas, sandwiches, wraps and salads.



# SUITE ACCOMMODATIONS

NAVIGATOR | DISCOVERY | JOURNEY



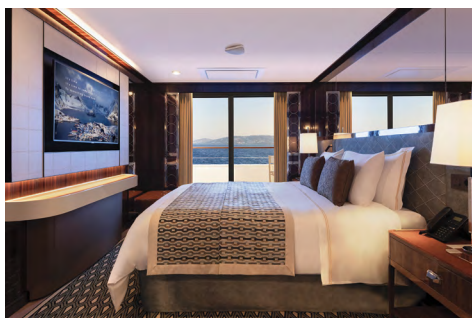
## NS | NAVIGATOR | 465 SQ. FT.

Breathe easy in our most spacious suite. Generous, double floor-to-ceiling glass sliders with ocean views create the perfect balance of indulgent nights aboard after thrilling days ashore.



## DS | DISCOVERY | 445 SQ. FT.

The Discovery suite is your personal haven while sailing to your next destination. Step from your plush bedroom or comfortable living room onto your furnished private balcony as you anticipate what new adventures await.



## JS | JOURNEY | 382 SQ. FT.

Light from the floor-to-ceiling windows fills the bedroom and living room in the Journey suite, inviting you to step onto your oversized private balcony and admire the views. When it's time to pull the curtains, retire to your sumptuous queen bed for sweet dreams of the day's adventures.



Suites include butler service  
and expanded room service menu.

Suite and Stateroom measurements are approximate.

Furnishings vary by yacht and may be different than as depicted in photographs.

Itineraries are at the discretion of Atlas Ocean Voyages and may be modified up to and during the expedition. Cultural immersion events, Gastronomic Guests and Guest Speakers may be changed at any time without notice. Images are only a representation of expedition experiences. Travelers may require a visa for travel. Additional restrictions may apply. For full terms and conditions contact your preferred Travel Advisor or Atlas Ocean Voyages. ©2025 Atlas Ocean Voyages®. Ships' Registry: Portugal | SLS\_4145\_08.12.25



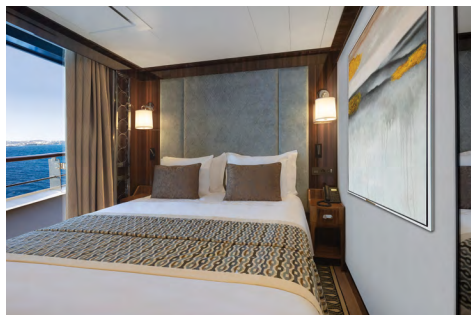
# BALCONY & OCEANVIEW STATEROOM ACCOMMODATIONS

HORIZON DELUXE | VERANDA DELUXE | HORIZON | VERANDA | ADVENTURE OCEANVIEW



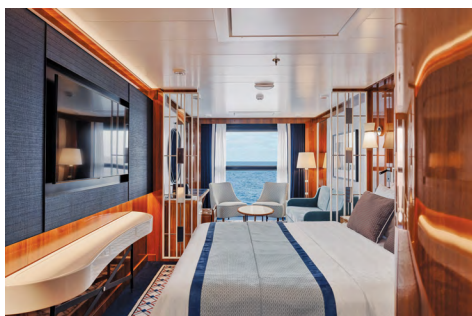
## E1 | HORIZON DELUXE | 300 SQ. FT.

The Horizon Deluxe stateroom delivers impressive views and refreshing ocean breezes from its floor-to-ceiling windows with a top-drop Juliette balcony. Get swept away in the magnificent blue sky and sea in every direction.



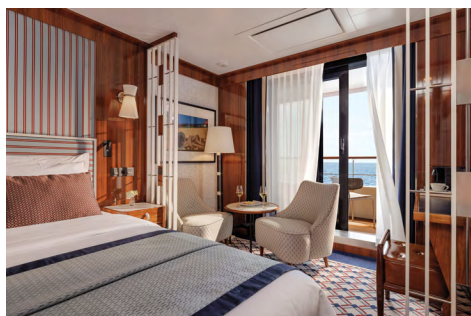
## E2 | VERANDA DELUXE | 300 SQ. FT.

Start and end your day on a generously sized balcony with rich, teak furnishings. Salt and sea breeze from your walk-out balcony are the perfect complement to a morning coffee or evening nightcap.



## A1/A2 | HORIZON | 270 SQ. FT.

From your spacious sitting area with a sofa, chairs and a vanity, look out over the ocean vistas through the floor-to-ceiling windows of your Juliette balcony with top-drop electric window. Relax and recharge in lavish comfort.



## B1/B2 | VERANDA | 270 SQ. FT.

A sitting area with chairs and a vanity opens onto a private walk-out balcony with comfortable teak furnishings in the Veranda Stateroom. Take in the captivating views as you relax indoors or outside.



## AO | ADVENTURE OCEANVIEW | 183 sq. ft.

A panoramic picture window offers endless views of the horizon as you enjoy the many amenities, including a sitting area, spa bathroom and more.

Horizon and Horizon Deluxe Staterooms include a Juliette balcony.

Veranda and Veranda Deluxe Staterooms include a private balcony.

Adventure Oceanview Staterooms include a panoramic picture window.

# EXPEDITIONS FOR EVERY SEASON

With Atlas Ocean Voyages®, there's an adventure for every explorer all year-round to explore from pole to pole. For the intrepid explorer who thrives on a challenge, our Polar Expeditions come closer to the most remote corners of the world, including more expeditions to the High Arctic of Svalbard and Greenland, Antarctica and Patagonia and the Falklands. For explorers passionate about art, architecture, folklore and connecting with local communities, our Cultural Expeditions take you to captivating corners of South America, the Caribbean and Northern Europe. For the culinary connoisseurs who want to indulge in fine wine and cuisine, we offer Epicurean Expeditions in the Mediterranean. There's more than one way to explore the world.







## **POLAR EXPEDITIONS**

### **ANTARCTICA, PATAGONIA & THE FALKLANDS & ARCTIC**

For explorers who wish to conquer the farthest reaches of the globe.

- Private Charter Jet Service
- Shore Landings Led by Expert Field Guides
- Escorted Sightseeing Safaris by Zodiac
- Polar Plunge
- Atlas Ocean Voyages Parka and Vest



## **EPICUREAN EXPEDITIONS**

### **MEDITERRANEAN**

For connoisseurs who want to explore culinary traditions, cuisine and wine.

- Culinary Presentations and Wine Tastings
- Cooking Demonstrations and Cuisine Tastings
- Events Hosted by a Tastes & Traditions Expert on Select Expeditions
- Atlas Ocean Voyages Backpack



## **CULTURAL EXPEDITIONS**

### **NORTHERN EUROPE, ICELAND & SOUTH AMERICA**

For adventurers seeking connection to rich history, local communities, and natural marvels.

- Enrichment Programs and Workshops on Select Expeditions
- Authentic, Local Experiences and Onboard Events on Select Expeditions
- Jospir Grill Dining Experience at 7AFT Grill
- Atlas Ocean Voyages Backpack



ATLAS  
OCEAN VOYAGES®

TO BOOK, CALL YOUR PREFERRED TRAVEL ADVISOR.